

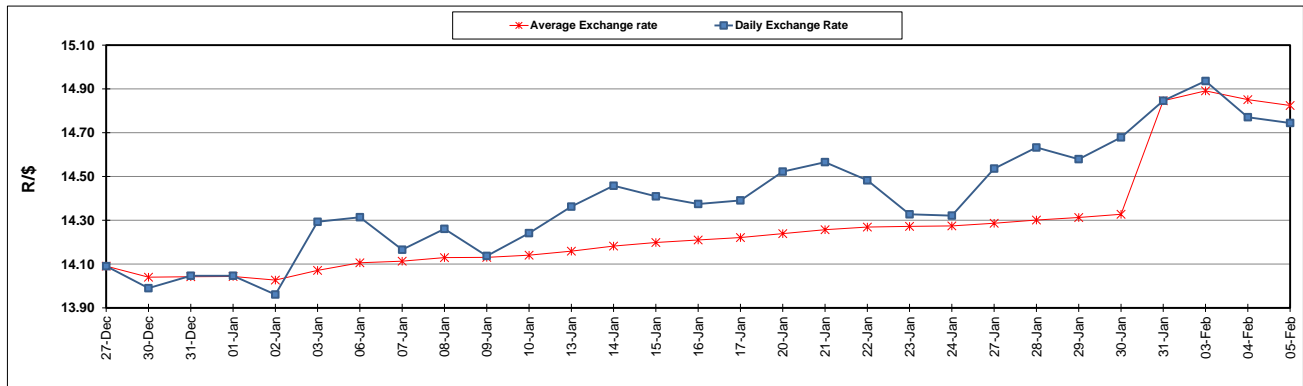
	PETROL 95 ULP	PETROL 93 ULP & LRP	DIESEL 0.05%	DIESEL 0.005%	ILL. PAR.
GAUTENG PUMP PRICE (SA c/l) AS FROM 05/02/2020	1,603.000	1,571.000	-	-	-
WHOLESALE PRICE (SA c/l) AS FROM 05/02/2020	-	-	1,457.260	1,462.660	924.728
SINGLE NATIONAL MAXIMUM RETAIL PRICE	-	-	-	-	1,176.000
BASIC FUEL PRICE - 05/02/2020 (SA c/l)	654.004	642.643	677.247	683.039	663.030
PRESS RELEASE CONTRIBUTION TO BFP 05/02/2020 - 05/02/2020 (SA c/l)	686.970	664.970	737.630	743.030	734.128
UNIT OVER/(UNDER) RECOVERY - 05/02/2020 (SA c/l)	32.966	22.327	60.383	59.991	71.098
AVERAGE BASIC FUEL PRICE 31/01/2020 - 05/02/2020	661.260	649.959	677.548	683.015	665.061
AVERAGE UNIT OVER/(UNDER) RECOVERY 31/01/2020 - 05/02/2020	35.461	24.761	63.832	63.765	71.317

ANALYSIS MOVEMENT OF AVERAGE OVER/(UNDER) RECOVERY

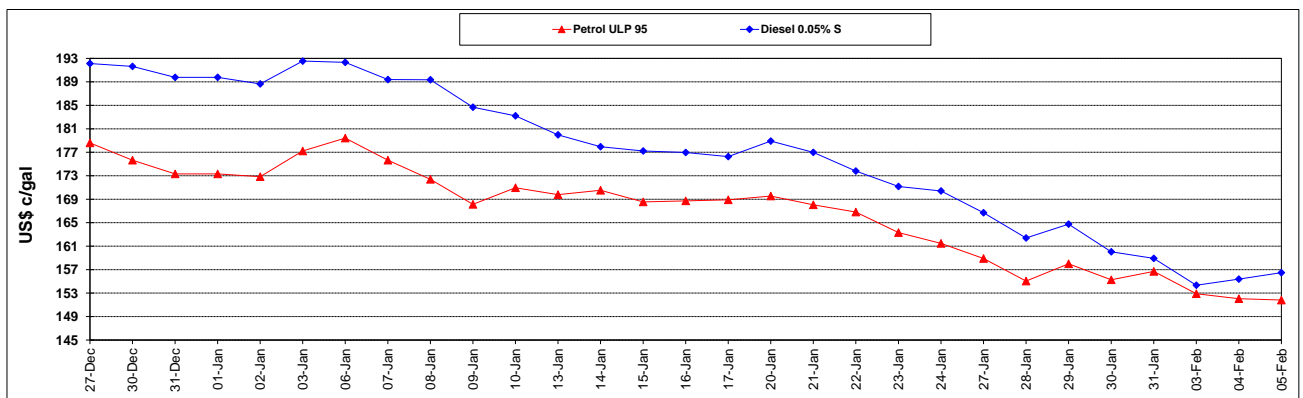
	PETROL 95	PETROL 93	DIESEL 0.05%	DIESEL 0.005%	ILL. PAR.
- MOVEMENT IN INTERNATIONAL PRODUCT PRICES	57.620	46.543	86.538	86.654	93.605
- MOVEMENT IN EXCHANGE RATE	(22.160)	(21.782)	(22.706)	(22.889)	(22.288)
AVERAGE UNIT OVER/(UNDER) RECOVERY 31/01/2020 - 05/02/2020	35.461	24.761	63.832	63.765	71.317

R/\$ EXCHANGE RATE - (R/\$14.7445 - 05/02/2020)

EXCHANGE RATE USED IN BASIC FUEL PRICE



INTERNATIONAL PRODUCT PRICES OF BASKET USED IN BASIC FUEL PRICE



BASIC FUEL PRICE IN SA CENTS PER LITRE

